

INFORMATION

407-2 Nishigaichi, Sayo-cho, Sayo-gun
Hyogo 679-5313, Japan
<http://www.nhao.jp>



General Guide

Phone +81-790-82-0598

Fax +81-790-82-3876

E-mail address : koenka@town.sayo.lg.jp



Astronomical Guide

Phone +81-790-82-3886

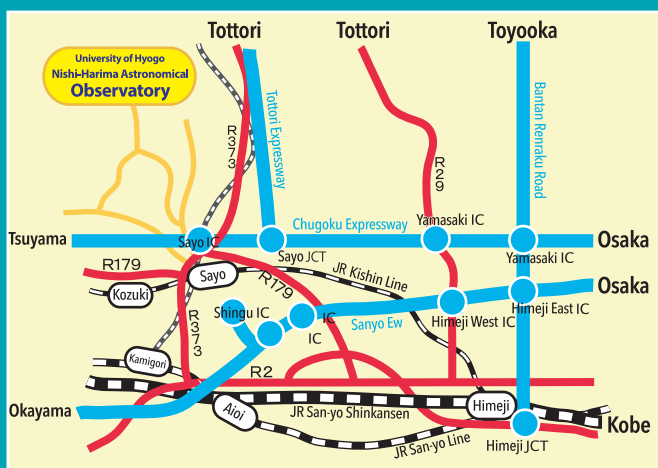
Fax +81-790-82-3514

E-mail address : harima@nhao.jp

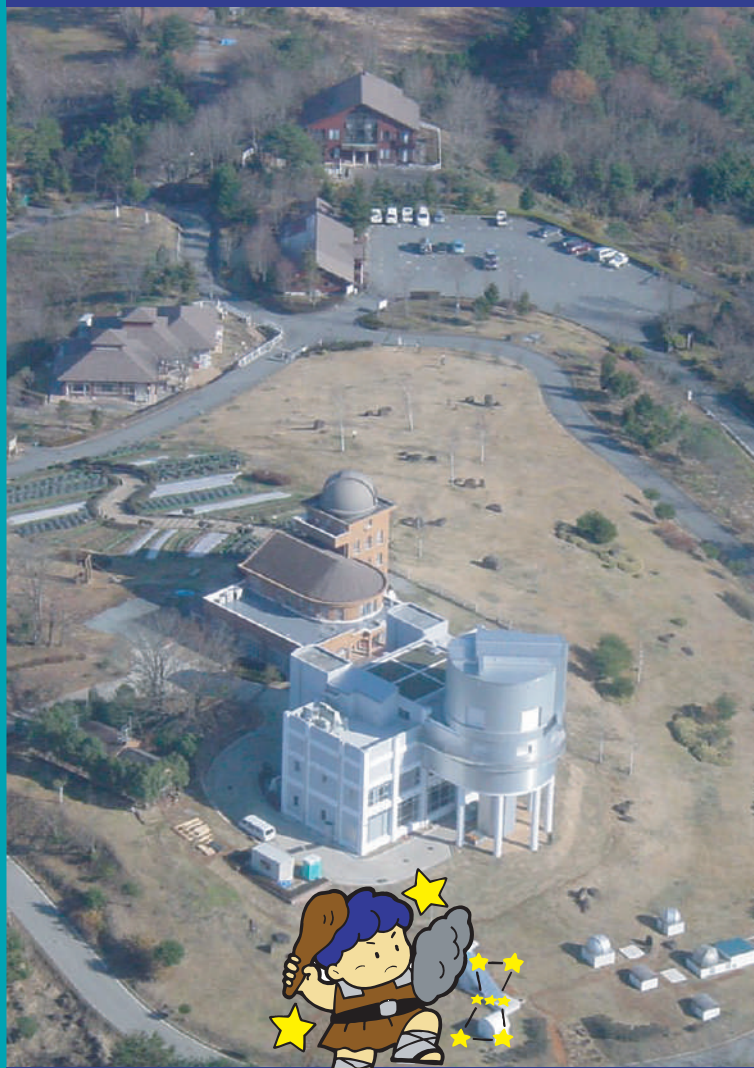
ACCESS

by Car [from Osaka] Chugoku Expressway - Sayo IC ~ 2 hours
[from Kobe] Daini Shinmei - Bantan Rd - Chugoku Expressway ~ 2 hours
[from Himeji] Himeji Bypass - Road 179 ~ 1 hour 20 minutes
[from Aioi] Techno Line ~ 50 minutes

by Train [from Osaka] Super Hakuto Limited Express ~ 1 hours 30 minutes
[from Himeji] Kishin Line ~ 2 hour
[from Kamigori] Chizu Express ~ 20 minutes
From Sayo Station it takes about 15 minutes by taxi.



Welcome! to NAYUTA's world



兵庫県立大学西はりま天文台
NISHIHARIMA ASTRONOMICAL OBSERVATORY



The Nishi-Harima Astronomical Observatory is home to the 2m Nayuta Telescope, where researchers are working to unravel the mysteries of the universe. At the same time, researchers work hard to communicate their findings to the general public, through stargazing tour meetings and astronomical events. The Nayuta Telescope is one of its kind and has the unique ability to be accessed by the general public for research and education.



2m NAYUTA Telescope

Information

※Smoking is prohibited within and around the observatory.

Open 9:00 am to 9:00 pm
North building of observatory: 9:00 am to 5:00 pm - South building of observatory: 9:00 am to 6:00 pm

Closed Second and fourth Mondays or on Tuesdays if Monday is a public holiday
Year-end/New year (Dec. 28 to Jan. 3)
One week during rainy season (July) and a few days in early October. (open everyday during summer vacations)

Admission FREE
※Please refrain from entering the observatory with pets (service dogs, guide dogs, and hearing dogs are welcome).

Stargazing Tour

※The Stargazing Tour for staying guests is held every evening.

The observation tour using the 2m NAYUTA telescope will be held from 7.30pm to 9pm. Participation is FREE.

Accommodations

☆ Check IN/OUT
Check IN: from 16:00
Check OUT: until 10:00

☆Family Lodge (5 Persons per Room)

Accommodation for families and small groups.
6 medium sized (2LDK) apartments.
Each apartment offers 2 bedrooms, living room, kitchen, bath and toilet

Tax reductions apply for people holding disability certificates.

☆Public Stargazing Tour☆ (Bad Weather cancellation possible)

Saturdays and Holidays: Reservation is required (up to 100 Guests)
Sundays: Reservation is not required

☆Group Lodge (20 Persons per Room)

The group accommodations (more than 10 Persons) contain a "Creative Activity Room" which can be used during rain. There are 6 tatami rooms (20 Persons each) with 28 tatami mats, as well as 2 leader rooms.

◎ Children should be 3 years and older and younger than middle school.

※ Accommodations may not be available during cleaning.
※ Please enjoy your meals at the cafeteria or the campsite.
Eating or drinking at the accommodations is not permitted.

Nayuta meaning

Originally a Buddhist term referring to an extremely great number (larger than 100 million), derived from Sanskrit नयुत (nayuta) meaning "myriad" or नयितु (niyuta). From this, the Nishi-Harima Observatory 2m telescope was named by the public as a telescope for observing the many stars and galaxies of the vast universe.



FRIENDS OF NHAO

Join the Astronomical Observatory's Friends Meeting ...

In addition to delivering the monthly astronomical magazine "UCHU NOW", you can also participate in fun events such as regular meetings and stargazing party.

Day Campsite

※ outdoor cooking facilities for guests and the public.
※ available from March 21 to November 30

For inquiries about usage and fees, please contact us by phone, mail or check our website.

☆ available from 11:00 am to 3:00 pm
※ only available for the general public on Sundays. Reservations accepted one week before date of use.
※ free to use for guests of the group lodge from check-in to check-out.



☆Please inquire the rates for each accommodation by phone or through our website.



Accommodations / Availability

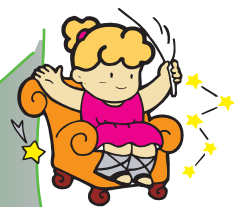
Phone +81-790-82-0598

URL <http://www.nhao.jp>

Accommodation reservations are accepted by telephone from the first Sunday six months before the date of use. Reception hours are 9am to 5pm. Please check availability on our website.



Nishi-Harima Astronomical Observatory Center for Astronomy, University of Hyogo



Smoking is strictly prohibited within and around the Observatory!



Campfire Site
No.1

Stone
Garden

Flower Garden

Flower Garden

Cherry Tree
'Sora-zakura'

Play Ground

Campfire Site
No.2

Cherry Trees

INFORMATION

- A Office
- B Cafe Canopus
- C Family Lodge
- D Group Lodge
- E Barbecue Site
- F Observatory (North Building)
- G Observatory (South Building)
- H Satellite Dome A·B
- H Satellite Dome C·D
- I Solar Telescopes
- J Infrared Telescope Exhibition Room
- K Sundial

B Cafe Canopus



● Restaurant (32 seats) ● Mensa (120 seats)

Contact Canopus : +81-790-82-2226

K Sundial



A Reception|Office



Information

E Barbecue Site



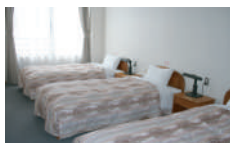
Accommodations

C Family Lodge

The lodge with kitchen, bath and toilet offers 6 apartments for 5 people each. You can enjoy the feeling of a villa and cook for yourself or enjoy the service offered by the cafeteria.



● Barbecue Site



● Bed Room



● Bed Room
(Japanese-style)



● Kitchen

D Group Lodge



Group Accommodation (10 persons or more) offer 6 large rooms for up to 20 persons and 2 smaller rooms for up to 4 persons.



● Japanese-style room



● Creative Activity Room

Museum Shop twinkle



Located in the North Building of the Observatory

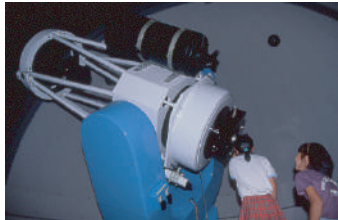


We sell original goods.



Observatory

F Observatory (North Building) ● 60cm Telescope



Used for daytime stargazing session, educational observations, engineering observations, etc.

I Solar Telescopes



Equipped with a high performance filter and CCD camera, it can capture solar activity with visible light and H α rays. The current appearance of the sun is recorded and displayed in the observatory hall.

※H α : Red light emitted by hydrogen

G Observatory (South Building)



The South Building houses the large Nayuta Telescope, which is build around a two meter mirror.

J Infrared Telescope Exhibition Room



Japan's first infrared telescope made in 1973.

H Satellite Dome A·B

※fees apply



For advanced photography

H Satellite Dome C·D

※Free



For intermediate viewing

Observation Rest House

The rest house for observers using the satellite domes A and B.



Please inquire about making reservations.

One of JAPAN's Largest Telescopes NAYUTA



It is the one of world's largest public telescopes. Looking through the eyepiece, one can see celestial objects, more than a million light years away. With a special camera, you can even observe the light of galaxies, which has travelled for more than a billion years.

The 2m NAYUTA Telescope is used during the stargazing tour every evening.